



# GOLDEN TIMES

WALLPAPER



**GOLDEN TIMES**

**BY WB**



# GOLDEN TIMES







# GOLDEN TIMES







**01-PS1502**



**02-PS1503**



**03-PS1501**

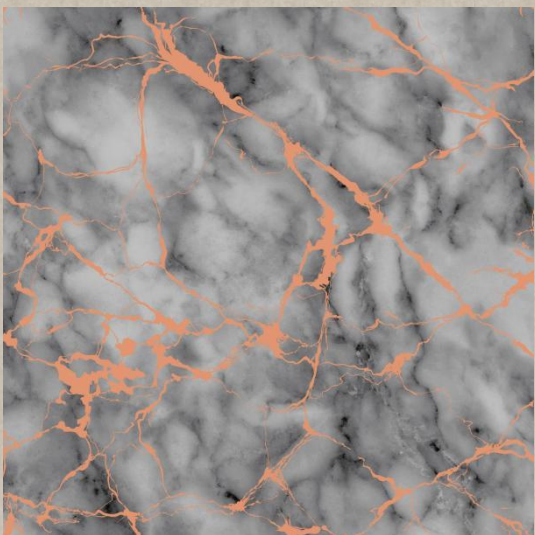




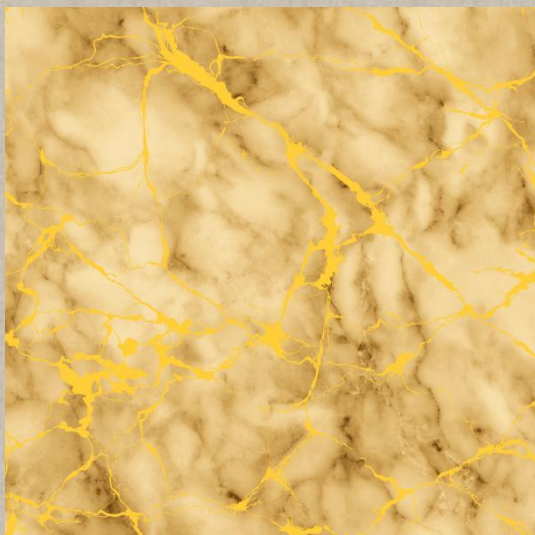
**04-PS702**



**05-PS701**



**06-PS704**



**07-PS703**





08-931803



09-931802



10-931807

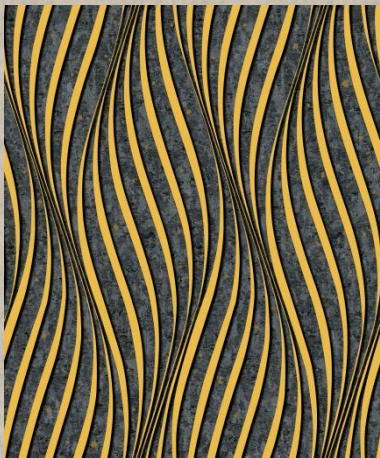


11-931805



12-931806





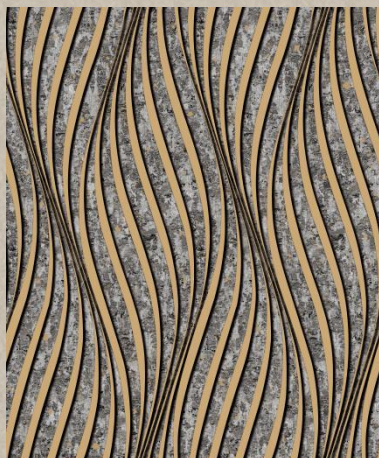
**13-930068**



**14-930061**



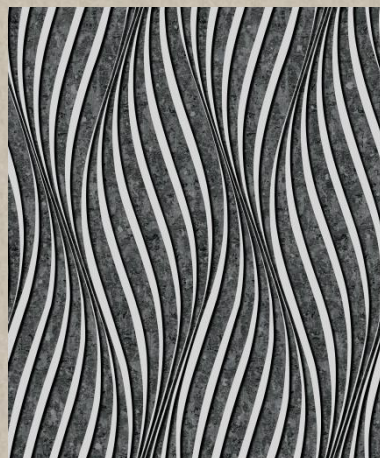
**16-930062**



**18-930063**



**20-930065**



**22-930066**



**24-930067**





**15-930071**



**17-930072**



**19-930073**



**21-930075**



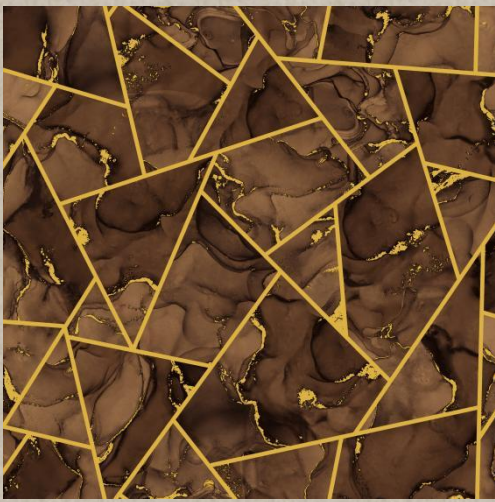
**23-930076**



**25-930077**

(The color of the image may vary from the actual product, please refer to the color in GOLDEN TIMES catalogue book)

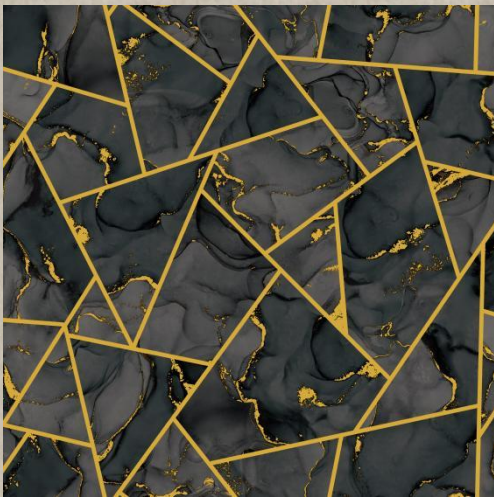




**26-931505**



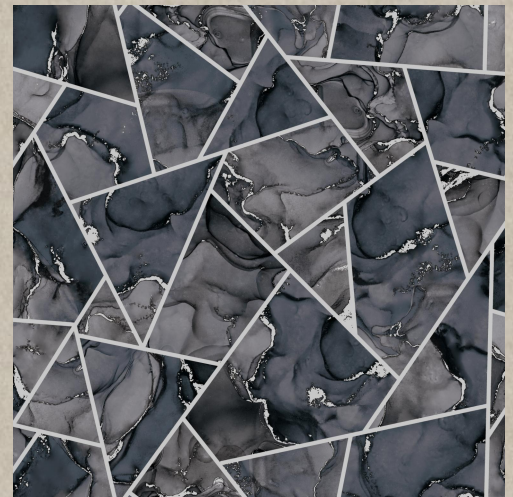
**27-931503**



**29-931506**



**30-931501**



**28-931502**

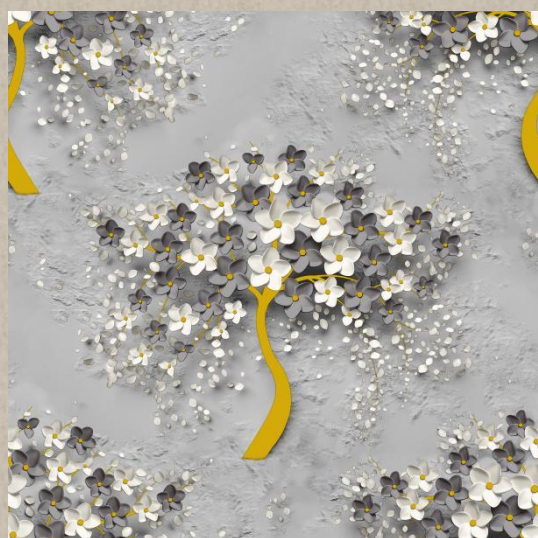




**31-PS1403**



**32-PS1402**



**33-PS1404**

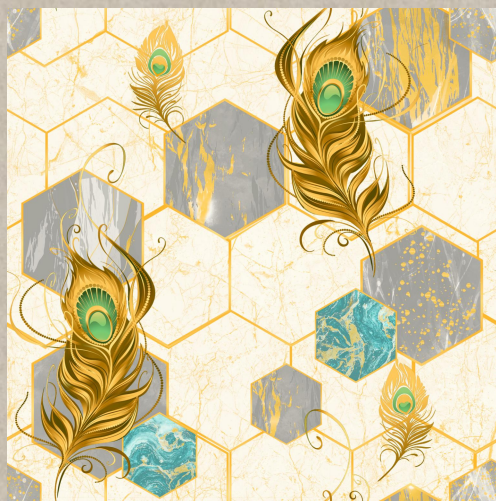


**34-PS1401**





**35-931701**



**36-931702**



**37-931703**



**38-931706**



**39-931707**



**40-931705**





41-931602



42-931601



43-931605





**44-930021**



**45-930022**



**46-930023**



**47-930025**



**48-930026**



**49-930027**



**50-930028**



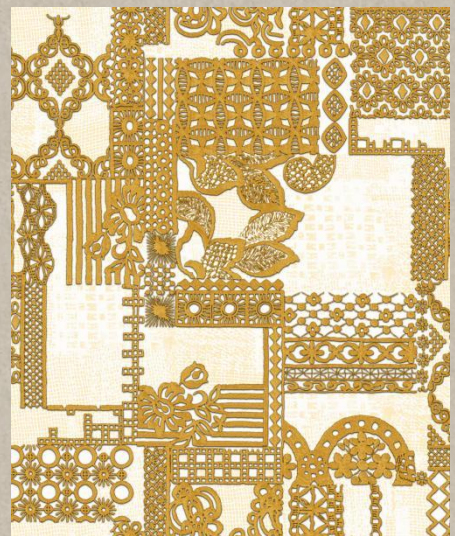
**51-930029**

(The color of the image may vary from the actual product, please refer to the color in GOLDEN TIMES catalogue book)





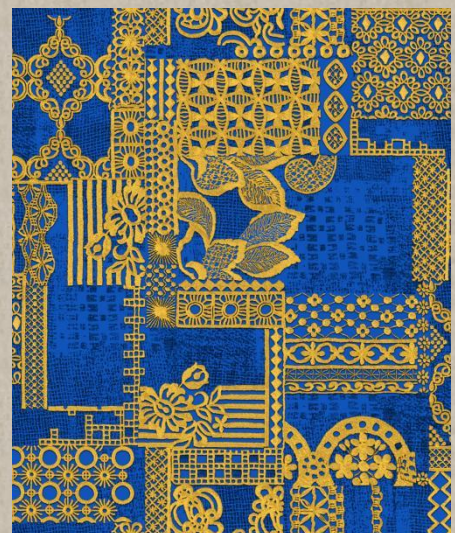
**52-931302**



**53-931301**

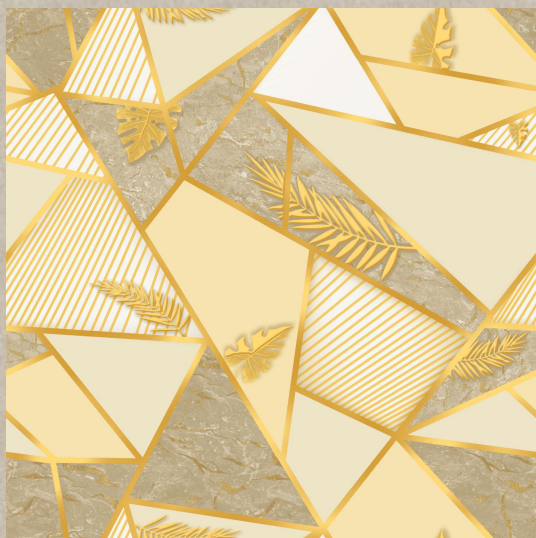


**54-931305**



**55-931303**



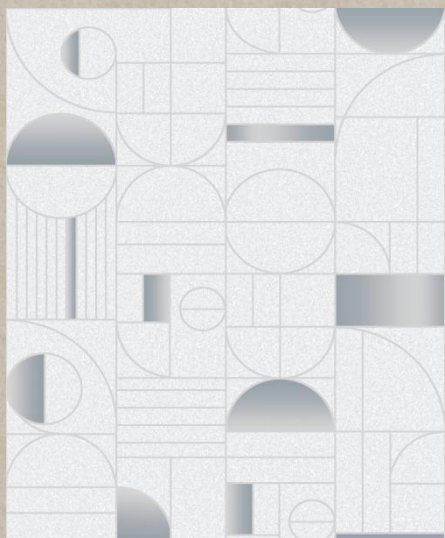


**56-930011**

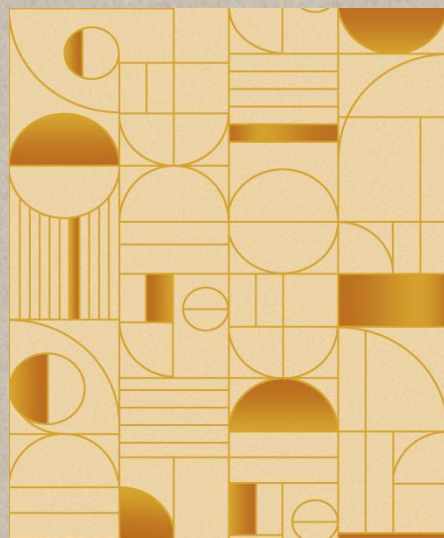


**57-930012**





**58-930091**



**59-930093**





**60-930031**



**61-930032**



**62-930033**

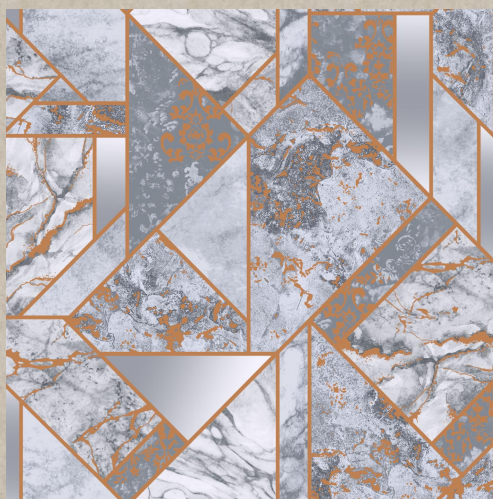


**63-930035**

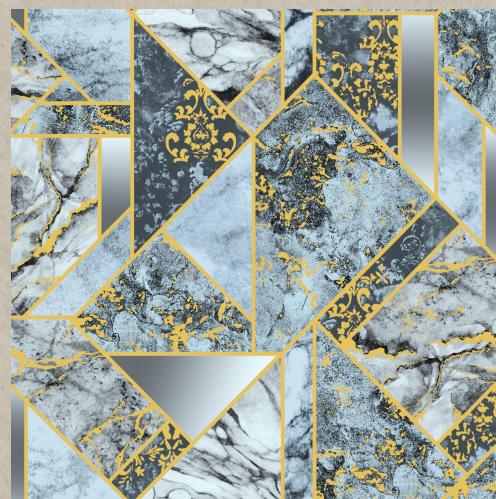




**64-930087**



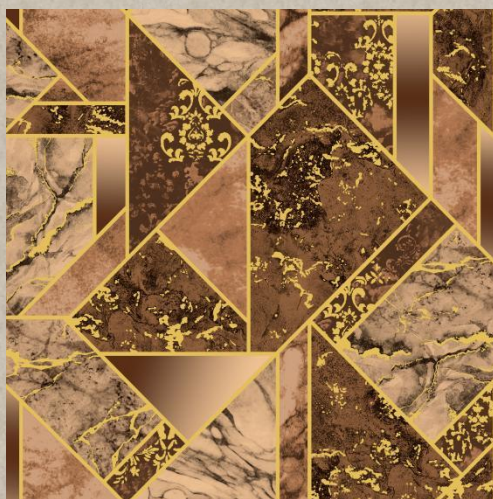
**65-930089**



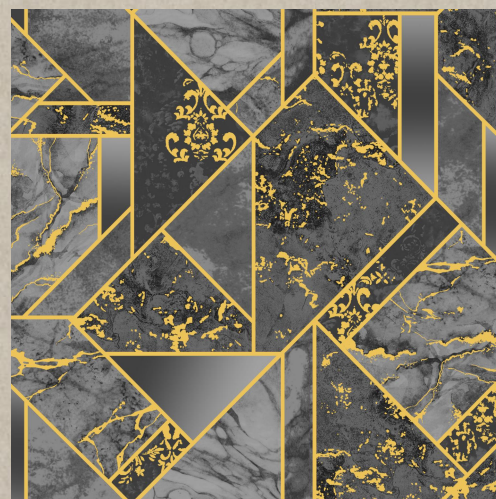
**66-930085**



**67-930081**

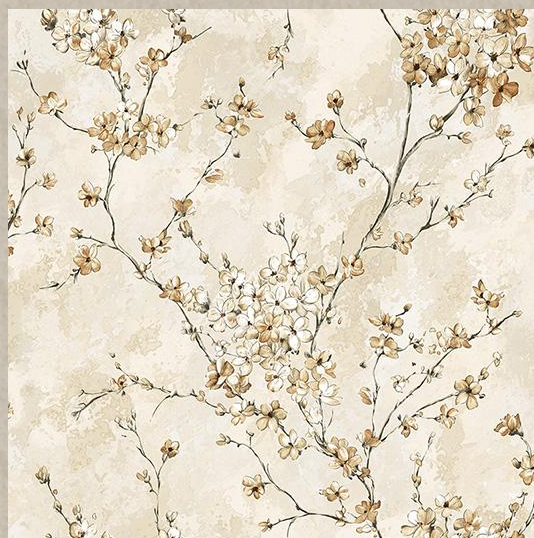


**68-930080**

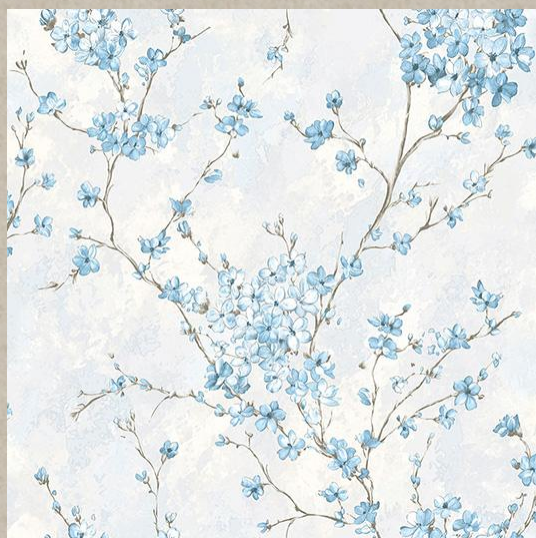


**69-930083**





**70-11103**



**71-11104**



**72-11105**





**73-11122**



**74-11125**



**75-11124**





**76-930052**

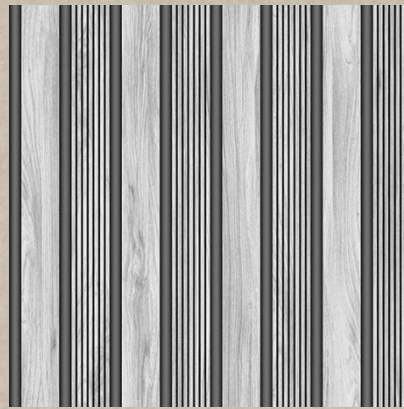


**77-930056**





**78-11151**



**79-11152**



**80-11153**



**81-11154**



**82-11156**



# GOLDEN TIMES

| PAGE | PATTERN | PAGE | PATTERN | PAGE | PATTERN |
|------|---------|------|---------|------|---------|
| 1    | PS1502  | 29   | 931506  | 57   | 930012  |
| 2    | PS1503  | 30   | 931501  | 58   | 930091  |
| 3    | PS1501  | 31   | PS1403  | 59   | 930093  |
| 4    | PS702   | 32   | PS1402  | 60   | 930031  |
| 5    | PS701   | 33   | PS1404  | 61   | 930032  |
| 6    | PS704   | 34   | PS1401  | 62   | 930033  |
| 7    | PS703   | 35   | 931701  | 63   | 930035  |
| 8    | 931803  | 36   | 931702  | 64   | 930087  |
| 9    | 931802  | 37   | 931703  | 65   | 930089  |
| 10   | 931807  | 38   | 931706  | 66   | 930085  |
| 11   | 931805  | 39   | 931707  | 67   | 930081  |
| 12   | 931806  | 40   | 931705  | 68   | 930080  |
| 13   | 930068  | 41   | 931602  | 69   | 930083  |
| 14   | 930061  | 42   | 931601  | 70   | 11103   |
| 15   | 930071  | 43   | 931605  | 71   | 11104   |
| 16   | 930062  | 44   | 930021  | 72   | 11105   |
| 17   | 930072  | 45   | 930022  | 73   | 11122   |
| 18   | 930063  | 46   | 930023  | 74   | 11125   |
| 19   | 930073  | 47   | 930025  | 75   | 11124   |
| 20   | 930065  | 48   | 930026  | 76   | 930052  |
| 21   | 930075  | 49   | 930027  | 77   | 930056  |
| 22   | 930066  | 50   | 930028  | 78   | 11151   |
| 23   | 930076  | 51   | 930029  | 79   | 11152   |
| 24   | 930067  | 52   | 931302  | 80   | 11153   |
| 25   | 930077  | 53   | 931301  | 81   | 11154   |
| 26   | 931505  | 54   | 931305  | 82   | 11156   |
| 27   | 931503  | 55   | 931303  |      |         |
| 28   | 931502  | 56   | 930011  |      |         |

Geen patroon  
Recessed blind  
Fines match  
Anversicht  
Blind van  
Без рисунка на печати



Wand measure  
Encoder to roll  
Passe the wall  
Die Wand ausmessen  
Encoder to panel  
Кодировать на стене



Recht patroon  
Recessed blind  
Straight match  
Gerader Anstrich  
Cross match  
Прямой рисунок на печати



Direct self-adhesive  
Meistert à la mur  
Sufficient Adh. Surface  
Dalle Selbstklebend  
Buena resistencia a la luz  
Достаточный уровень адгезии



Verspreid patroon  
Recessed wall  
Cross match  
Verstretter Anstrich  
Recessed pattern  
Неравномерный рисунок на стене



Strekend plakt  
Lift's visible  
Recessed pattern length  
Dekend lieder  
Invertir plages  
Неравномерный рисунок



Zeer goed afneembaar  
Verwijderbaar  
Zelfe verwijderbaar  
Nicht verschleissend  
May be removed  
Molto rimovibile  
С peel-and-stick  
Съемный



Vernietigend volgens de Franse NF norm  
Not to stain the norm NF 10600  
Fire resistant according to the French NF standard  
Non-détruisible selon des normes NF 10600  
Ignifugue conforme al estándar NF 10600  
Не разрушается при воздействии огня по стандарту NF 10600



Geluid afneembaar  
Anschleibe à son  
Équipable  
Rustico absorbent  
Fire retardant  
Пожаростойкий



•Lijn met roller op de wand aanbrengen  
•Encoder to wall  
•Apply paste with roller to the wall  
•Die Wand mit einem Roller einstreichen  
•Aplicar la cola directamente en la pared con un rodillo



•SMART paper direct op de wand aanbrengen  
•Paste le SMART paper on the wall  
•Apply SMART paper directly to the wall  
•SMART paper direct auf die Wand anbringen  
•Colar el papel SMART a la pared



•SMART paper op maat afsnijden, kleef  
•Cutter before measure  
•Cut SMART paper to size  
•SMART paper nach Maß abschneiden  
•Aplicar el papel SMART ya lijado directamente en la pared



•Zelfe jaren later eenvoudig droeg te verwijderen  
•Facile à enlever, même après plusieurs années  
•Simple to remove even years later  
•Enrich trocken zu entfernen, auch nach mehreren Jahren  
•Facil de sacar incluso después de muchos años